



MINISTRY OF EDUCATION

University Politehnica of Bucharest

Faculty of Chemical Engineering and Biotechnologies

Doctoral School **Chemical Engineering and Biotechnologies**

ABSTRACT

PhD Thesis

Selective composite membranes with biological applications

PhD student:

Eng. Ch. Cristina BĂRDACĂ (URDUCEA)

Supervisor:

Prof. Dr. Eng. Gheorghe NECHIFOR

Bucharest 2022



MINISTRY OF EDUCATION
University Politehnica of Bucharest

Faculty of Chemical Engineering and Biotechnologies

Doctoral School **Chemical Engineering and Biotechnologies**

ABSTRACT

PhD Thesis

Decision Nr. 850 from 09.06.2022

Selective composite membranes with biological applications

Doctorand: Eng. Ch. Cristina BĂRDACĂ (URDUCEA)

Doctoral Commission

President	Prof. Dr. Eng. Gabriel Lucian RADU	from	University Politehnica of Bucharest
Supervisor	Prof. Dr. Eng. Gheorghe NECHIFOR	from	University Politehnica of Bucharest
Referent	Prof. Dr. Eng. Ioan MĂMĂLIGĂ	from	Gheorghe Asachi Iasi Technical University
Referent	Prof. Hab. Dr. Simona Gabriela BUNGĂU	from	Oradea University
Referent	Prof. Hab. Dr. Eng. Ștefan Ioan VOICU	from	University Politehnica of Bucharest

Bucharest -2022

CUPRINS

THANKS	3
INTRODUCTION	8
PARTA – LITERATURE SYNTHESIS	12
Chapter I – MEMBRANES AND MEMBRANE SEPARATION PROCESSES	12
1.1.-Introduction	12
1.2. Membrane processes	14
1.2.1. Osmosis	18
1.2.2. Microfiltration	19
1.2.3. Dialysis	20
1.2.4. Electrodialysis	21
1.2.5. Membranes distillation	23
1.2.6. Ultrafiltration	27
1.3. Polymer based membrane	31
1.4. Classical asymmetrical membrane obtaining	37
1.5. Membrane characterization summary	51
1.5.1. Porous membranes characterization	52
1.6. Applications	76
PhD Thesis objective	85
PART B. EXPERIMENTAL PART	85
Chapter II. OBTAINING AND CHARACTERIZING SELECTIVE NANOSTRUCTURED MEMBRANES APPLIED IN BIOLOGICAL COMPOSITION SEPARATION PROCESSES	87
2.1. Preliminary tests for obtaining polysulfone-quartz fiber nanocomposite membranes decorated with TiO₂	87
2.1.1. Introduction	87
2.1.2. Experimental part	89
2.1.3. Results and discussion	93
2.1.4. Conclusions	101
2.2. Nanostructured polysulfone membranes	102
2.2.1. Introduction	102
2.2.2. Composite membranes obtaining and characterization	102

2.2.2.1. <i>Polymer solution preparation and membrane obtaining</i>	110
2.2.2.2. <i>Porous membrane characterization</i>	112
2.2.3. Results	116
2.2.3.1. <i>Electrochemical parameters evolution</i>	116
2.2.3.2. <i>Scanning electron microscopy</i>	116
2.2.3.3. <i>Thermal analysis</i>	118
2.2.3.4. <i>Water flux determination and BSA retention</i>	119
2.2.4. Discussion	119
2.2.5. Conclusions	130
2.3. Nanocomposite membrane from cellulose acetate for proteins separation	131
2.3.1. Introduction	131
2.3.2. Experimental part	132
2.3.2.1. <i>Materials</i>	132
2.3.2.2. <i>Procedures</i>	133
2.3.2.3. <i>Equipment</i>	135
2.3.3. Results and discussions	135
2.3.4. Conclusions	136
2.4. Results and discussions	136
2.5. Conclusions	142
PART C. OVERALL CONCLUSIONS AND PERSPECTIVES OF THE RESEARCH	143
C1. Overall conclusions	143
C2. ORIGINALITY ELEMENTS OF THE DOCTORAL THESIS	145
C3. RESEARCH PERSPECTIVES	146
ANEXE	147
Published paper Cristina BĂRDACĂ (URDUCEA)	147
REFERENCES	148
Representative articles	165

INTRODUCTION

The constitution of the doctoral thesis “Selective composite membranes with biological applications” is, after all, a fundamental research activity, reunited with the applied research activity. Applied research refers to the separation of biological compounds through selective nanostructured membranes, obtained in its own regime that aimed at the characterization and applications of nanostructured membranes.

The main objective was to study the preparation and applicability of nanostructured membranes for the separation of biological compounds (proteins).

The doctoral thesis "Selective composite membranes with biological applications" presents original results of all experimental research conducted to test the membranes obtained, on their use in separation processes for biological compounds, such as proteins, but also for obtaining new membrane materials for the purpose proposed. To achieve this goal, the following research steps were completed, namely: The study of obtaining membranes by phase inversion: polysulfone-based membranes; membranes based on cellulose acetate and both Characterization by the latest physico-chemical techniques: by scanning electron microscopy; infrared and UV-Vis spectrometry; electrochemical techniques; elemental (EDAX) and thermal (ATD; DSC) analysis; permeation of solvents; rejection of standard proteins and the study of protein separation through prepared nanostructured membranes.

The thesis addresses a topic of interest whose importance is required by practice.

The thesis is part of the preoccupations of scientific research in the country and abroad and is topical with a theoretical and practical importance justified by obtaining polysulfone-based membranes; cellulose acetate-based membranes and their characterization by the latest physico-chemical techniques, electrochemical techniques; elemental (EDAX) and thermal (ATD; DSC) analysis; permeation of solvents; rejection of standard proteins. The paper presents the original results of experimental research conducted in order to obtain new membranes.

The rationale for the theme is to address the issue, in the context of current guidelines in the field, of improving the performance of membrane processes applicable in the industrial and commercial fields. The doctoral thesis is structured in two parts: the theoretical and the experimental.

Chapter I entitled "MEMBRANES AND SEPARATION PROCESSES" highlighted the progress made by the use of composite and nanocomposite membranes in the separation of biological compounds.

Membranes have become essential elements of the technologies of depollution, recovery and concentration of chemical species in dilute solutions.

Among the most advanced types of membranes, the nanostructured ones and based on nanoparticles or reactive chemical nanospecies are the most frequently studied in the current stage.

The applications of nanocomposite and nanostructured membranes have diversified so that they cover the extractive industry, the food and agriculture industry, the chemical and petrochemical industry, but also biotechnology, biomedicine and environmental protection.

The separation of biological products and in particular of proteins is in this context an area of great interest and topicality.

Chapter II "OBTAINING AND CHARACTERIZATION OF SELECTIVE NANOSTRUCTURED MEMBRANES APPLIED IN THE PROCESSES OF SEPARATION OF BIOLOGICAL COMPOUNDS"

Although the precipitation immersion technique is simple, it consists in forming a polymer solution film, extending it on a support and immersing it in the coagulation bath, it has multiple operational parameters: polymer solution concentration, solvent nature, insolvent nature and type of post-formation treatment.

In this context, the time elapsed between the formation of the polymer solution film and its contact with the coagulation bath, although often specified, no method has been developed to trace the influence on the formation of the asymmetric membrane.

This paper presents an electrochemical technique for monitoring the evolution of the polymer solution film and by choosing the contact times it was possible to establish the influence on the membrane formed by subsequent coagulation.

In order to highlight this process, four representative times were chosen from the diagram of electrochemical parameters for the appearance of the curves in the diagram, obtaining four membranes: MPSf1; MPSf2; MPSf3 and MPSf4.

Complementary membrane analysis techniques: scanning electron microscopy, thermal analysis, water permeation, bovine serum albumin retention, but also porosity and thickness established that the process performance of membranes increases in the order:

MPSf1 > MPSf2 > MPSf3 < MPSf4

This conclusion shows that by determining the variation curves of the electrochemical parameters of the polymer solution film, an optimal stationary time can be imposed in contact with the environment so as to obtain the desired performance. At the same time, the maximum contact time with the environment can be established so that membranes with inferior characteristics are not obtained.

Membranes based on biopolymers and artificial polymers have been reconsidered in current field studies due to their superior biodegradability and easy preparation in a wide range of morphologies and designs.

The paper presents the results of the use as a raw material of cellulose acetate in used film films, thus capitalizing on both the polymer and the silver on the surface of the films.

By phase inversion, ultrafiltration membranes were obtained from a 10% cellulose acetate solution. Recovered cellulose acetate membranes were compared with membranes obtained under the same conditions as standard cellulose acetate.

Membranes were characterized morpho-structurally (FTIR, SEM) and in the process of protein ultrafiltration (BSA). Permeate fluxes were higher in standard cellulose acetate membranes (by about 10%), but retention was higher in acetate membranes from film films (by 10%).

The presence of silver nanoparticles in the recovered membrane material can provide resistance to biofouling and biodegradation.

In Part C "GENERAL CONCLUSIONS with ORIGINAL ELEMENTS OF THE DOCTORAL THESIS and RESEARCH PERSPECTIVES", in the thesis "Selective composite membranes with biological applications" three new types of membranes were obtained:

- Nanostructured quartz nanofiber membranes decorated with titanium dioxide polysulfone obtained by phase inversion.
- Nanostructured polysulfone membranes obtained by phase inversion controlled by electrochemical techniques.
- Cellulose-derived composite membranes recovered from film films on microporous polypropylene support.

Two new separation processes involving composite membranes have been developed:

- Separation by composite membranes cellulosic derivative-microporous support driven by the pH gradient.
- Separation of proteins (BSA) by nanostructured and nanocomposites based on polysulfone.

The research undertaken during the doctoral research internship "Selective composite membranes with biological applications" allows the development of new applications of the separation processes through composite membranes in magnetic field and with pH gradient.

Chapter II

OBTAINING AND CHARACTERIZATION OF SELECTIVE NANO-STRUCTURED MEMBRANES APPLIED IN THE PROCESSES OF SEPARATION OF BIOLOGICAL COMPOUNDS

2.2. Nanostructured polysulfone membranes

2.2.1. Introduction

Polymeric membranes constitute the broadest category of nanostructured filter material studied, marketed, and applied at the laboratory and industrial level [1,2,3,4].

The polymeric membranes made of polysulfone constitute an excellent filtering membrane (for micro-, ultra-, nano-, and hyper-filtration), as well as a performance matrix support for liquid membranes and macromolecular compounds or enzymes [2,5,6].

The presence of a sulfonic group characterizes polysulfone (PSf) as part of its repeating unit. In most cases is studied the polysulfone from bisphenol A and p, p' dichloro diphenyl sulfone (Figure 1) [7]:

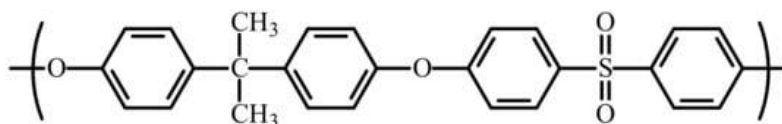


Figure 1. The chemical formula of the polysulfone UDEL® type.

The polysulfone is the most cited choice for composite membrane preparation [8]. The polymer has properties that make it extremely interesting for usage as a membrane material [9]:

*good solubility in solvents commonly used in the production of membranes (dipolar aprotic solvents such as N-methyl-pyrrolidone, dimethyl-acetamide, dimethyl-formamide, dimethyl-sulfoxide);

*good resistance to acids and bases as well as to other chemical agents over a wide pH range, to oxidation, and mechanical and thermal stresses;

*the possibility to be chemically modified due to the reactive aromatic nuclei;

*relatively high glass transition temperature ($T_g = 190\text{ }^\circ\text{C}$); and

*absence of crystallinity.

About 8–20% polysulfone solutions (commonly used to obtain membranes) have the right consistency for forming films and are adherent to various surfaces (glass, stainless steel, copper, aluminum, PVC, and teflon). Loeb and Sourirajan discovered the asymmetric membranes that could have a diffuse anisotropic or microporous anisotropic structure [1,10].

Figure 2 shows the scanning electron microscopy images of a microporous, nanostructured anisotropic polysulfone membrane obtained in the research group of the Polytechnic University of Bucharest [11].

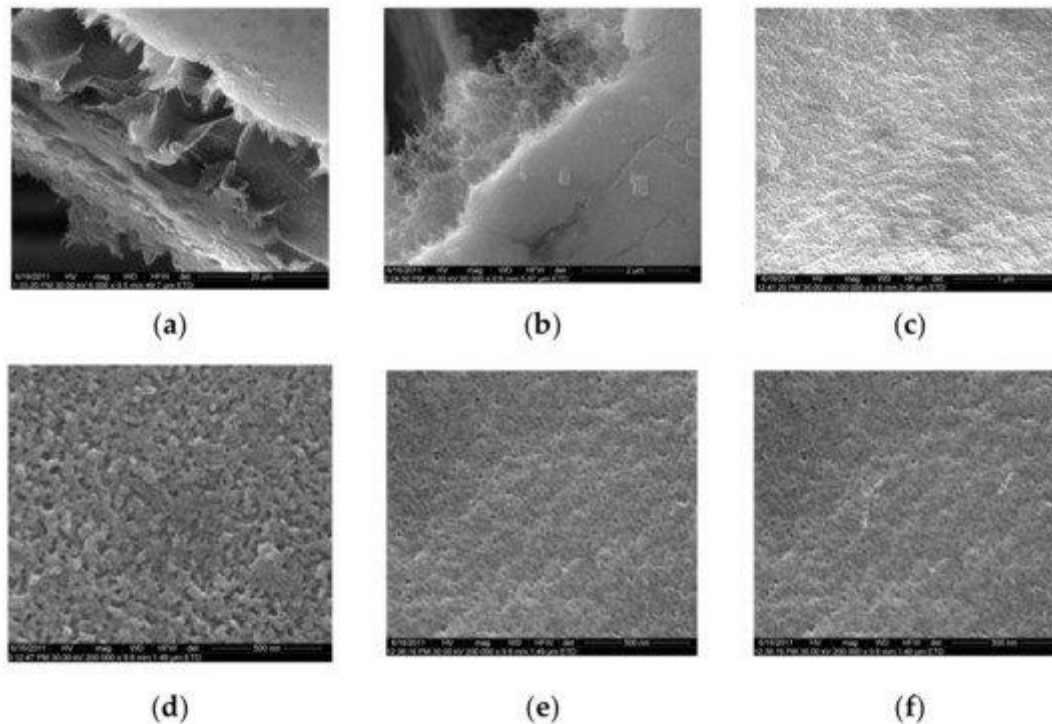


Figure 2. SEM images of a nanostructured polysulfone membrane (a)—section, (b)—section detail (active layer); (c)—surface layer and component nanoparticles; (d)—, (e)—nanostructure of microporous layer details; and (f)—dimension of the pores on the nanostructure surface.

The composition influences polymeric membrane material properties obtained by phase inversion because the polymer–solvent or polymer–solute interactions affect the polymer chains’ conformation [12]. Phase inversion is the best known and currently the most applied method for obtaining membranes at the industrial level. The concept of phase inversion was introduced in the literature by Kesting [13]. It involved transforming a homogeneous polymer solution into a two-phase system: one rich in polymer and forming the continuous part of the porous membrane and another poor in polymer, which fills its structure’s pores.

The process has three main stages [14,15]:

- Dissolving the polymer in a suitable solvent or mixture of solvents;
- filming the polymer solution on a flat or tubular surface of glass, metal, teflon, or textile; and
- precipitation of the polymer by treatment with a non-solvent (inversion of the actual phase).

By phase inversion, depending on the type of polymer, the concentration of the polymer solution, the thickness of the film, and the method and conditions of precipitation, membranes are obtained for most known applications: microfiltration (MF), ultrafiltration (UF), nanofiltration (NF), and reverse osmosis (RO), with symmetrical or asymmetrical structure, in flat or tubular shape [16,17,18].

The defining step for the membrane structure is that of immersion precipitation: immersion of the polymer solution film in a coagulation solution (precipitation) where the main component is the solvent; the coagulation solution must be chosen to allow the dissolution of the solvent specific to the polymer used. The precipitation of the polymer is the result of the loss of non-solvent and penetration of the polymer film

by the solvent [19,20]. This technique was first described and used successfully by Loeb and Sourirajan for the preparation of reverse osmosis membranes [10,21,22].

By phase inversion, immersion-precipitation technique, membranes are obtained from the most diverse polymers: polysulfone, nylon 6,6 [23] derived from cellulose, polycarbonate, polyphenylene oxide [24], polyoxadiazoles, polyimides [25], polyamides [26], etc.

The following features characterize the phase inversion process:

- The ternary system. The process involves at least one polymer phase, one solvent, and one non-solvent. The solvent and the non-solvent must be miscible (Figure 3).
- Mass transfer. The polymer solution is subjected to a mass transfer process to enrich the polymer film in the solvent. Mass transfer begins at the interface between the polymeric film and the coagulation medium (vapor or liquid). The diffusion phenomenon governs the changes in the composition of the polymeric film.
- The precipitation. An increase in the non-solvent concentration leads to a polymer solution thermodynamically unstable, and phase separation will occur. An essential aspect of the phase inversion is represented by a separation phenomenon in the ternary polymeric system. This phenomenon includes the equilibrium and kinetics of phase separation as the formation of membranes is a dynamic process [27,28,29].

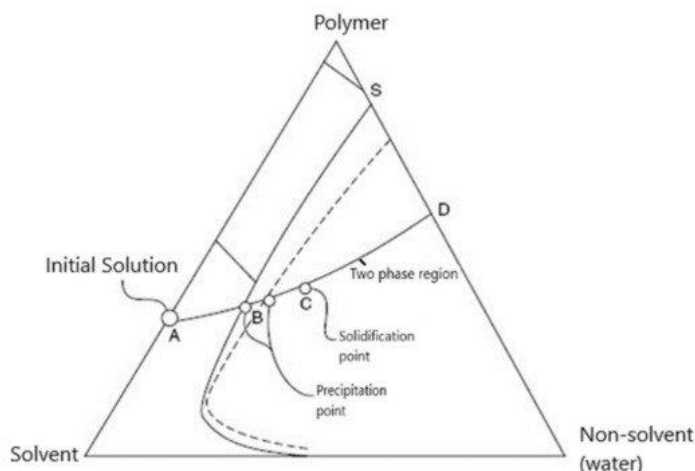


Figure 3. Diagram of the polymer-solvent-nonsolvent ternary system.

Phase inversion occurs when the concentration of non-solvent in the polymer/solvent/non-solvent system has increased to such a level that the solution is not thermodynamically stable. Therefore, segregation of the solution will occur [30].

The structure of the membranes is determined by:

-Choice of polymer-solvent-nonsolvent system.

-Diffusion rate of the solvent outside the polymer and the non-solvent inside the polymer.

Immediately after immersion, there is a rapid depletion of the solvent in the film and relatively low penetration of the non-solvent. The concentration of the polymer at the film-bath interface increases and gelation takes place. The thin, dense gel layer that forms this way is a protective layer that will act as a resistance to the solvent's external diffusion. Cleavage will lead to a decrease in polymer concentration and

an increase in the concentration of the non-solvent. At this point, the type of splitting will be the liquid–liquid phase separation [31]. The ternary system diagram highlights the two transitions (Figure 3).

Several researchers have conducted in-depth studies on the formation of ultrafiltration membranes by applying phase inversion through precipitation immersion [24,32,33,34]. The concentrated polymer solution is first spread in a layer, film on a support, and then immersed in a non-solvent bath. Then diffusion of the non-solvent occurs, and the solvent induces phase separation, forming the porous membrane structure.

The size and distribution of membrane pores are determined by the thermodynamics [35] and kinetics [33] of the phase inversion process, being closely related to the properties of the polymer solution and the non-solvent composition [36], and the operating conditions [37].

A deep understanding of the phase inversion process is valuable to effectively adjust and control membrane structure, flow, selectivity, and clogging process [36,38,39,40,41]. Several studies have been developed on the kinetics and thermodynamics of phase inversion [42,43,44]. Tompa first determined the thermodynamics of the polymer–solvent–non-solvent system phase diagram based on the Flory–Huggins theory [45]. Moreover, Altena and Smolders investigated the binodal ternary system, considering the concentration dependence on interaction parameters [46].

To study the phase inversion kinetics, Cohen et al. first proposed a mass transfer model with a series of hypotheses [47], and later Reuvers et al. considered interface diffusion and friction coefficients for components [48,49]. These models considered the common hypothesis on limit conditions imposed to the equilibrium boundary established at the interface between the coagulation bath and the polymer solution [50]. They were unable to study the spinodal decomposition of the phase inversion. Therefore, Kim et al. formally introduced a mass transfer to study spinodal decomposition [51]. Akthakul et al. applied several phases and multi-component Lattice–Boltzmann (LB) models to simulate the precipitation process [52] and highlighted the membrane structure’s asymmetry: thicker top layer and thinner compact inner layer. They also found that as the interaction between the polymer and the non-solvent increased, the membrane’s morphology changed from non-porous to porous.

Finally, some research groups [12,53] focused on the computer simulation of the phase inversion process of the polymer solution from the interface to the interior by spinodal decomposition, using the Monte Carlo method. They studied the effect of polymer solution concentration and temperature on solvent and non-solvent diffusion and the formation mechanism of the porous membrane asymmetric structure.

We can conclude that, classically, the phase inversion technique involves four critical steps: preparation of a polymer solution in the desired solvent, the formation of the polymer solution film on a flat support, the immersion of the film in a coagulation bath containing polymer non-solvent, membrane conditioning. All phase inversion stages are essential for the prepared membrane’s nanostructure and were studied in detail for more than six decades.

In this paper, we study, through an electrochemical technique, the influence of the contact time with the environment of the polymer film until its introduction into the coagulation bath. The system chosen for membrane preparation is polysulfone-dimethylformamide-aqueous ethanol solution (PSf-DMF-EW).

2.2.2. Materials and Methods

2.2.2.1. Materials

The polymer used was a high viscosity BASF type (S6010—BASF, BTC Europe GmbH, Budapest, Hungary). The solvents were: N, N’dimethylformamide (DMF) (ACS puriss reagent, Sigma-Aldrich, Merck, Redox Lab Supplies Com SRL, Bucharest, Romania), and ethyl alcohol (E) (Supelco®, Merck,

Redox Lab Supplies Com SRL, Bucharest, Romania). The ultrapure water was obtained with a Millipore RO system (MilliQ® Direct 8 RO Water Purification System, Merck, Redox Lab Supplies Com SRL, Bucharest, Romania) with 18.2 $\mu\text{S}/\text{cm}$ conductivity. The bovine serum albumin (BSA) (66,000 Da) used for the permeation and retention assessment was procured from Sigma-Aldrich (Merck, Redox Lab Supplies Com SRL, Bucharest, Romania).

2.2.2.2. Preparation of the Polymer Solution

The determined amount of polysulfone base polymer at the desired concentration to be prepared, 12%, was gradually introduced, under stirring (magnetic stirrer, IKA® C-MAG MS, from IKA®-Werke GmbH & Co. KG, Staufen, Germany), into the vessel containing the solvent. The mixing beaker had a lid. The mixing procedure was continued until the polymer was completely dissolved. The laboratory working conditions were: temperature 24 ± 1 °C and relative humidity of 61 ± 1 %. The desired polymer solution was obtained in no more than 4 h. The obtained solution was filtered on a device equipped with a metal sieve made of stainless steel wires, with a mesh size of 20×20 μm . This process aims to remove solid (undissolved) impurities that negatively influence the filming process and, thus, the membrane's structural characteristics.

The solution was subjected to the deaeration process to remove the air trapped in the dissolution process. The polymer solution's air bubbles can lead to the appearance of discontinuities and implicitly defects in the membrane structure in the filming process. Deaeration/degassing was achieved by standing in a closed vessel for 48 h.

The degassed solutions were subsequently stored in hermetically sealed containers. The polymer solution casting was performed at room temperature (24 ± 1 °C) and humidity (61 ± 1 %), using a certain amount of solution and applying it directly to a smooth glass surface (intended for thin-layer chromatography) to a thickness of 500 μm .

Immersion in the ethanol–water (EW) coagulation bath, in a 1:1 volume ratio, was performed after a predetermined time.

[Figure 4](#) presents the primary operations carried out to obtain the membrane, highlighting the stage that is the object of the present study ([Figure 5](#)).

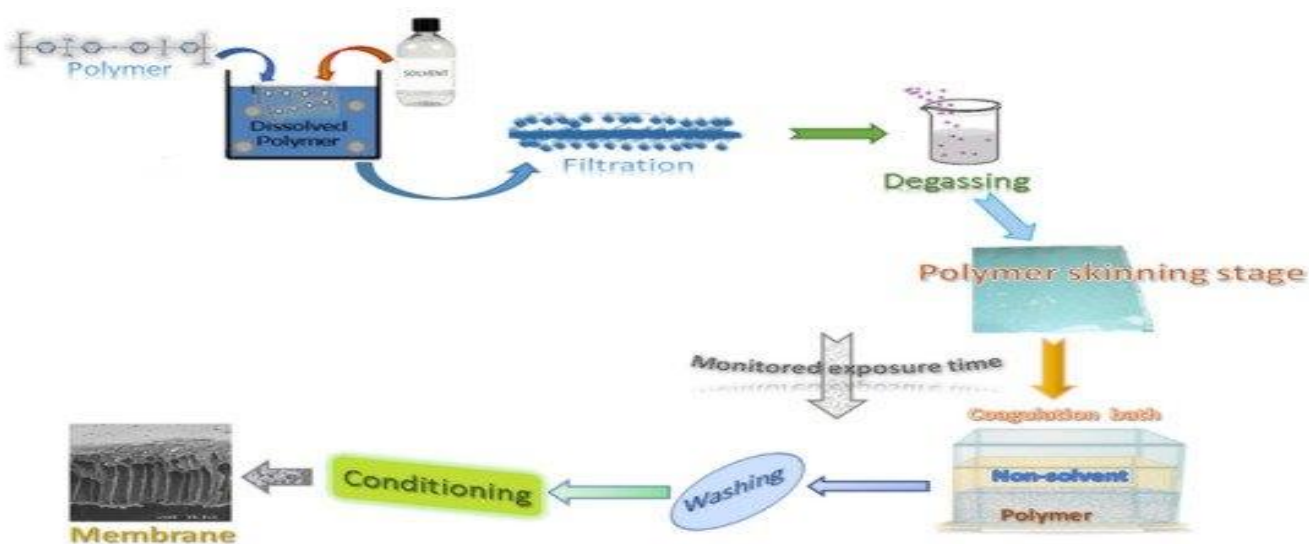


Figure 4. Phase inversion procedure for obtaining polysulfone membranes.

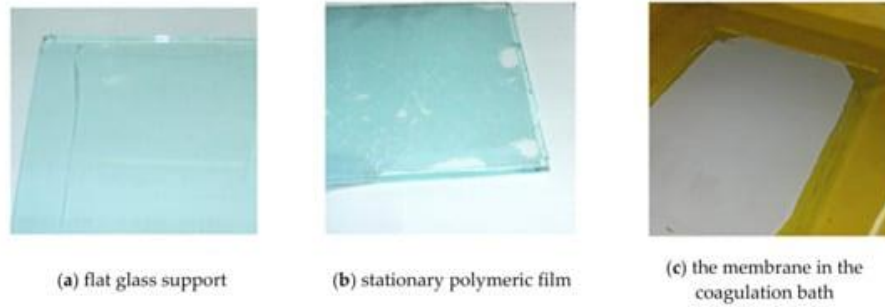


Figure 5. Polymeric film in the studied stage (arrow in [Figure 4](#)), between casting (a), stationary in the medium (b), and coagulation in the bath (c).

2.2.2.3. Characterization of Porous Membranes

The complete characterization of the membranes consists of determining their physico-chemical, thermomechanical, and hydrodynamic parameters [[12,54,55,56,57,58](#)]. In the followings, there are briefly presented the characterization methods applied on the membranes produced in the study.

Porosity (ε) represents the fraction of voids in the membrane structure and is calculated as the ratio between all the pores' volume and the apparent volume of the membrane (1):

$$\varepsilon = \frac{V - V'}{V} \quad (1)$$

where:

- V = apparent membrane volume (cm^3), and
- V' = actual membrane volume (cm^3).

In this paper, the porosity was determined gravimetrically, using water as a wetting agent, so that the porosity is easily determined by considering the volume of water (V_{water}) in the membrane relative to the geometric volume of the membrane (V_{membrane}) (2) [[59](#)]:

$$\varepsilon = \frac{V_{\text{water}}}{V_{\text{membrane}}} \cdot 100 \quad (2)$$

The permeability of liquids (water) expressed as their hydrodynamic flow when applying a pressure gradient offers the possibility to determine the average pore radius applying the Hagen–Poiseuille equation, adapted by Vellicangil and Howell for asymmetric membranes (3) [[60](#)]:

$$J = \frac{\varepsilon \cdot r^2 \cdot \Delta p}{3 \cdot \pi \cdot \eta} \quad (3)$$

where:

- J = hydrodynamic flow;
- r = average pore radius;
- Δp = pressure difference when measuring the flow J , and
- η = viscosity of the reference liquid (water).

The membranes performance in terms of separation capacity and flow characteristics are given by two fundamental parameters: Flow and selectivity.

The flow (J) is generally defined as the volume of fluid (water, in this case) that passes through the membrane in the unit of time per unit area (4) [[20,61,62](#)]:

$$J = VS \cdot t \quad (4)$$

where:

- J = flow (L/m²h);
- V = the volume of fluid passed through the membrane (L);
- S = membrane surface (m²), and
- t = time (h).

The decision to use a membrane in a particular process is based primarily on the standardized feature called “normalized distilled water flow”. It is determined from the ratio of the volume of distilled water flowing through a membrane in a given time to a certain pressure difference (5):

$$J = VS \cdot t \cdot \Delta p \quad (5)$$

where:

- J = flow (L/m²h bar);
- V = distilled water volume (L);
- S = membrane surface (m²);
- t = time (h), and
- Δp = pressure difference (bar).

Usually, the membranes are tested to determine the normalized water flow at a pressure difference of 1 bar. The selectivity or retention (R) of membranes represents their ability to retain on their surface a single component of a mixture (solution). It is expressed in the form of the degree of retention (R), determined according to Formula (6):

$$R = \frac{c_f - c_p}{c_f} = 1 - \frac{c_p}{c_f} \quad (6)$$

where:

- c_f = solute concentration in the supply fluid (% mass, g/L, mols/L);
- c_p = concentration of solute in the permeate (% mass, g/L, mols/L).

In our case, we used bovine serum albumin (BSA, 69 kDa, Merck, Redox Lab Supplies Com SRL, Bucharest, Romania).

2.2.2.4. Preparation of Membrane Samples

After coagulation of the polymer film, the membrane was washed and dried in a vacuum oven for 48 h at 60 °C. Then, the central part of the membrane was cut to the size of 15 cm × 15 cm. Afterwards, five samples as discs with a diameter of 5 cm and two rectangles (5 cm × 5 cm) were obtained ([Figure 6](#)).

The porosity, water flows, and BSA retentions were determined for each membrane type using the five samples. For thermal analysis, the brown sample was used, and for electron microscopy, the blue sample.

2.2.2.5. Structural, Thermal, and Electrochemical Investigations

Electron microscopy offers the possibility to visualize the porous structure of membranes [45]. The upper surface and cross-section analysis give a clear picture of the general structure of the membrane. Thus, it highlights the thickness of the active and macroporous layer, and estimates can be made of the porosity and pore distribution according to the radius size. SEM investigations were performed on a Hitachi S4500 system (Hitachi High-Technologies Europe GmbH, Germany).

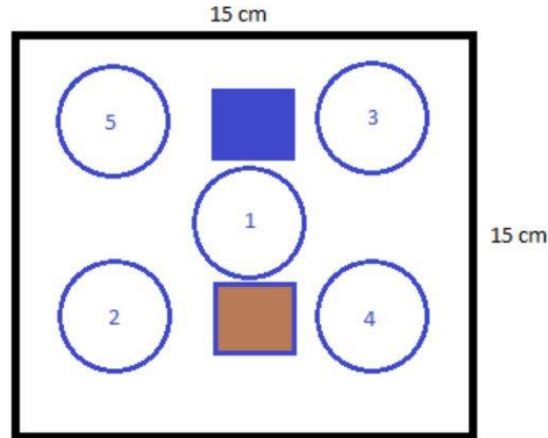


Figure 6. The sampling from the membrane under analysis—circular samples: 1 to 5 and the brown and blue rectangles.

Thermal analysis followed both weight loss (TG) and thermal effects (DSC). The importance of the thermal analysis in the polymeric membranes is well-established [25,58]. The polymeric specimens under study were thermally analyzed using a Netzsch Thermal Analyzer (NETZSCH-Gerätebau GmbH, Germany). The experiments were run in nitrogen atmosphere at 10 °C/min heating rate, covering a temperature range from 25 °C to 500 °C.

Electrochemical monitoring of the polymeric film between skinning (top skin formation) and coagulation was performed using an electrochemical probe on which the polysulfone solution film was deposited.

A complex electrochemical system as the dielectric analyzer—DEA 288—Netzsch (NETZSCH-Gerätebau GmbH, Selb, Germany) using a specific sensor (Coated Tool Mountable Comb—NETZSCH-Gerätebau GmbH, Germany) allowed advanced electrochemical studies on polymeric samples. The casted membrane film thicknesses were about 3 mm. The frequency applied for measurements was 10 Hz.

2.2.3. Results

2.2.3.1. Evolution of Electrochemical Parameters

The evolution of the polymeric film's main electrochemical parameters until the immersion in the coagulation bath is presented in the diagram from [Figure 7](#). The main electrochemical parameters that were followed up: ionic viscosity, ionic conductivity, loss factor, permittivity, or impedance, allowed to draw the frame for the PSf film evolution when left in contact with the environment. Usually, ion viscosity and loss factor could show the progress of a polymeric system at ambient temperature.

On the diagram presented in [Figure 7](#) it could be observed as an initially quite reduced loss factor increases slightly with the exposure time correlated with the viscosity decrease. It is reasonable to consider that the minimum value for the viscosity (occurring before gelation) corresponds to the loss maximum value.

The diagram shown in [Figure 7](#) indicates the time after which the polymeric film formed on the glass support and exposed to the environment is immersed in the coagulation bath. Each film is left in contact with the environment (atmosphere) 1, 3, 7, and, respectively, 12 min after which it is immersed in the coagulation bath, forming the membranes MPSf1, MPSf2, MPSf3, and MPSf4.

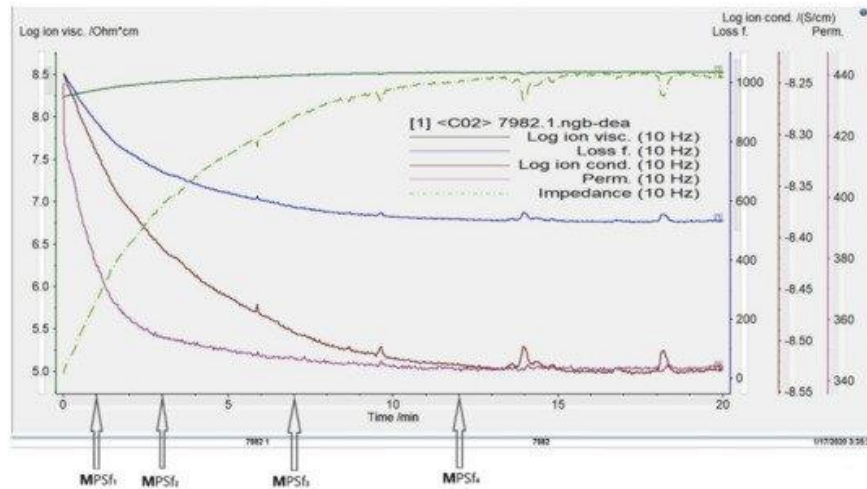
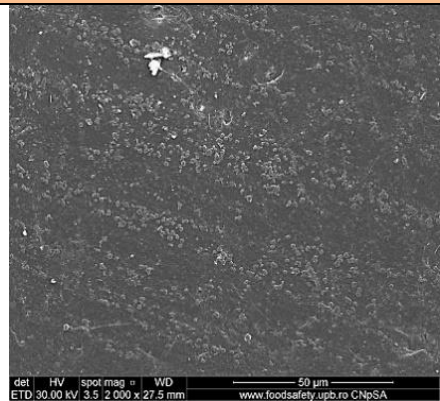
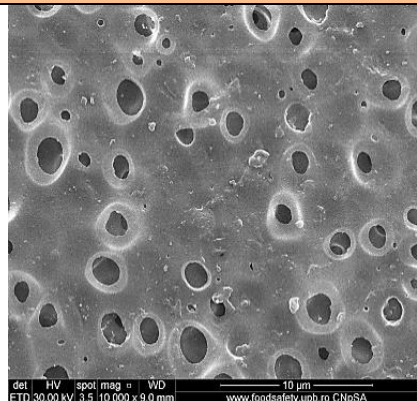


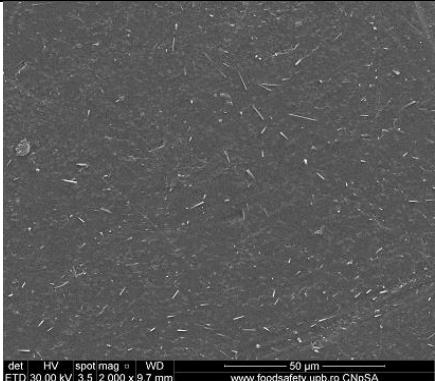
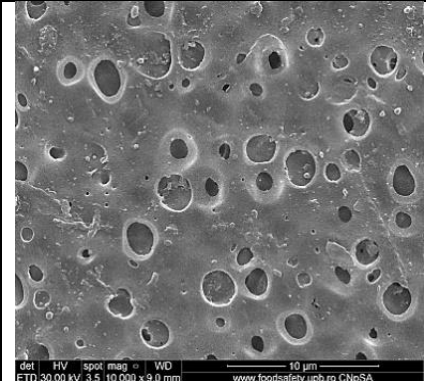
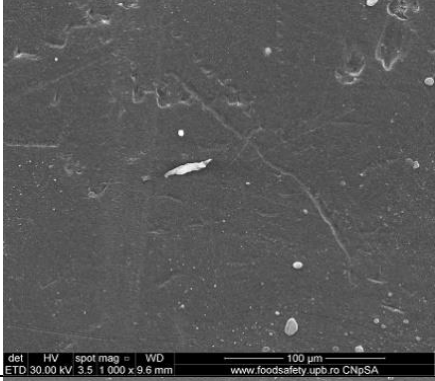
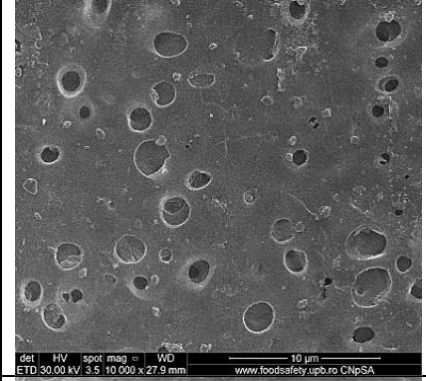
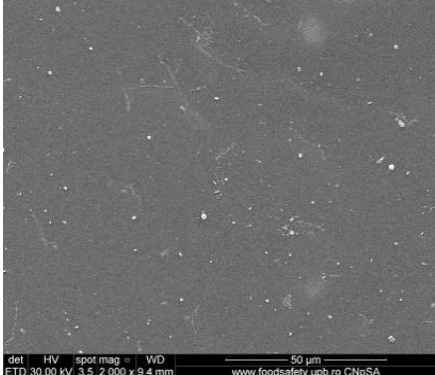
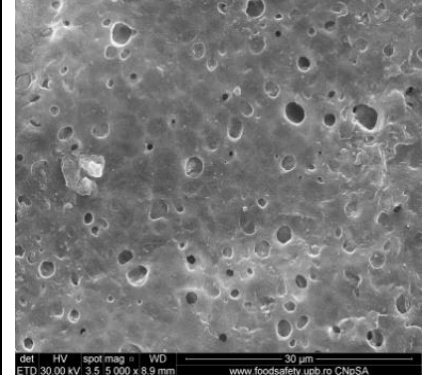
Figure 7. Diagram of electrochemical parameters vs. time and the moments when each film was introduced into the coagulation bath to obtain the analyzed membranes (MPSf1, MPSf2, MPSf3, and MPSf4).

2.2.3.2. Scanning Electron Microscopy

For the morphological study by scanning electron microscopy, a sample was fractured in liquid nitrogen, and the surface, posterior surface, and membrane section were visualized (Table 1). Table 1 presents the morphology of the surface and the posterior surface porosity. Also, there are presented the average thickness of the membranes and their porosity ($\epsilon\%$).

Table 1. Morphology of the surface, posterior surface porosity, average thickness, and porosity of the membranes obtained.

Membrane	Surface	Bottom	L (μm)	ϵ (%)
MPSf ₁			126 ± 2	72 ± 3

MPSf ₂			124 ± 2	69 ± 3
MPSf ₃			123 ± 2	67 ± 3
MPSf ₄			117 ± 6	63 ± 5

3.3. Thermal Analysis

[Figure 8](#) shows (as assembly) the thermal analysis performed on the sample cut from each of the four membrane types.

The centralized data show both the weight loss (TG) and the thermal effects (DSC) for the MPSf1, MPSf2, MPSf3, and MPSf4 membranes at 10 °C/min heating rate.

3.4. Determination of Water Flows and Retention of Bovine Serum Albumin (BSA)

Process performance was checked for five samples from each of the four prepared membranes. The experiments were performed on a Sartorius device with parallel filter modules to compare and measure flows and retention, respectively.

Experiments performed with pure water at a transmembrane pressure of 2 bar allowed to establish the normalized flow (J) [46]. For selectivity (R), BSA was retained from a solution of 100 mg/L [47] ([Table 2](#)).

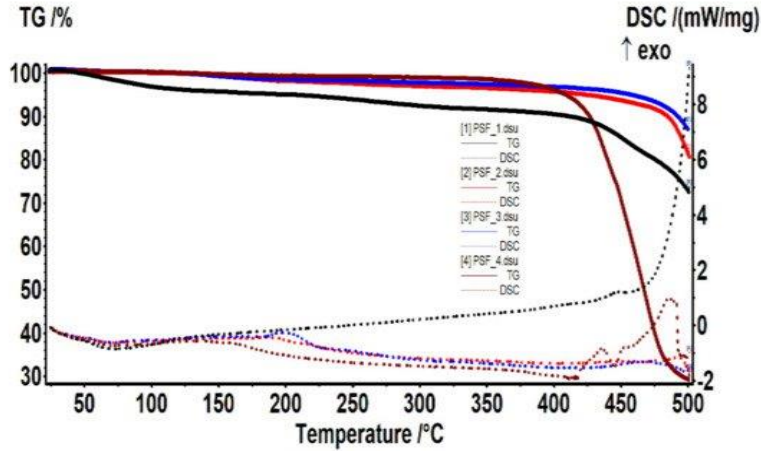


Figure 8. The set of thermal analysis data for the four membranes.

Table 2. Normalized flow (J) and Selectivity (R) for the prepared membranes.

Membrane	Permeability (L / m ² h bar)	Retention (%)
MPSf ₁	73 ± 2	75 ± 3
MPSf ₂	61 ± 2	82 ± 3
MPSf ₃	54 ± 2	93 ± 3
MPSf ₄	51 ± 2	84 ± 3

4. Discussion

The concept of phase inversion introduced by Kesting [29,30] in the 1970s can be summarized as follows: a homogeneous polymer solution is transformed into a two-phase system in which the solid phase is represented by the polymer that forms the membrane. In contrast, the liquid phase, in a tiny proportion, in the polymer structure will then lead to the formation of the pores. Phase inversion by precipitation immersion remains a crucial research topic as the details of the technological process of obtaining membranes (Figure 4), although relatively simple, involves multiple secondary operating parameters. Of these, in this study we focused on the polymer film's standing time in the environment (atmosphere) before entering the coagulation bath. The importance of ionic conductivity in obtaining polymeric membranes has been underlined in some of our previous work [63].

Considering that there are n_{PSf} ions of the polymer (PSf) per unit volume, with q_{PSf} charge magnitude and ionic mobility m_{PSf} , the ionic conductivity is expressed by:

$$\sigma = \sum PSf n_{PSf} \cdot q_{PSf} \cdot m_{PSf}. \quad (7)$$

The relationship between the mobility of the ion, m_{PSf} , and the characteristics of the polymer could be described through a simple Stoke model [64] that follows the velocity of a small particle (spherical with a radius r_{PSf}) in a homogeneous fluid material with a viscosity η_{PSf} when a force (i.e., electrical $q_{PSf}E$) acts on it.

$$F_{PSf} = q_{PSf}E = (6 \cdot \pi \cdot r_{PSf} \cdot \eta_{PSf} \cdot v_{PSf}). \quad (8)$$

When a specific current E is applied, then the velocity of each considered polymeric ion is:

$$v_{PSf} = m_{PSf} \cdot E \quad (9)$$

Therefore, the mobility of the ions under the conditions mentioned above is given by:

$$m_{PSf} = q_{PSf} / (6 \cdot \pi \cdot r_{PSf} \cdot \eta_{PSf}) \quad (10)$$

Under such simplified model, the ionic conductivity becomes:

$$\sigma = \sum_{PSf} (n_{PSf} \cdot q_{PSf} \cdot m_{PSf}) \quad (11)$$

Therefore, it results that the ionic conductivity varies with $(1/\eta)$. However, it should be mentioned that the above considerations apply until the gelation process. The mobility m_{PSf} , and the viscosity depend on the mobility of the polymer segments. Consequently, before the gelation process, both viscosity and ionic conductivity behave similarly. After the polymeric network is formed (at gelation), the viscosity tends to infinite. However, ionic conductivity is still finite as the polymer segments maintain their mobility to a certain extent.

The presence of the polar molecular polymeric segments influences the permittivity; consequently, the recorded permittivity decreases with time exposure increasing. Performing the measurements at various frequencies, it was observed that at low frequencies a dipolar alignment was possible and reflected in ion conductivity that could be related to polymer chains mobility. The first inflection point (given by the 1st derivative) on the ionic viscosity curve ($\log \eta_{PSf} = 8.28 \text{ } \Omega \cdot \text{cm}$) occurred at 1.1 min. This was the reason for considering as the first exposure time 1 min. Although, the variation of the ionic conductivity, in accordance with the ionic viscosity, was into a narrow range $10^{-8.25} \text{ S/cm}$ and $10^{-8.52} \text{ S/cm}$, it allowed to differentiate between the specific exposure times when the polysulfone underwent membrane preforming processes. Thus, the following inflection points recorded at 3.1 min, 6.8 min, and 12.0 min gave a hint regarding the choosing of the suitable exposure times. After 18 min, when the recorded electrochemical curves are flat at $\log \eta_{PSf} = 8.52 \text{ } \Omega \cdot \text{cm}$, respectively, $\log \sigma = -8.52 \text{ S/cm}$, and the permittivity is 3.46, the polysulfone membrane preformation ended.

It is almost unanimously accepted that during the precipitation immersion process, the membrane is formed by extracting the solvent into the non-solvent (the two solvents being miscible). Cohen [47] and Smolders [48] suggested that a gelling process forms the active layer. In contrast, the formation of the porous support layer results from a liquid-liquid phase separation that generates centers of nucleation and an increase in the polymer structure (Figure 9). The determining factor for the type of phase separation at any point in the solution is the local polymer concentration during precipitation. Immediately after immersion, the solvent's rapid migration around the polymer macromolecular chains takes place simultaneously with a slight penetration of the non-solvent. This is reflected in the polymer concentration increase at the interface between the film and the coagulation bath, thus starting the formation of the gel layer. The gel formed representing the active layer (in an incipient form) of the membrane will begin to act as a barrier on the remaining non-solvent, thus leading to the solidification of the gel (increasing the concentration of non-solvent and decreasing the concentration of solvent). Thus, Figure 9 explains the path taken in forming the active layer and, respectively, the microporous substrate of the asymmetric membrane obtained by phase inversion.

Figure 10 shows the SEM microscopy only for one of the prepared membranes (MPSf2) performed at ECOIND (an independent laboratory facility) as a requirement to validate the morphology of the obtained membranes. Both active layers (upper and bottom) highlighted in section (Figure 10a,b), as well as the aspect of the surfaces (upper and bottom) (Figure 10c,d) confirm the results obtained in the experimental part—see Table 1.

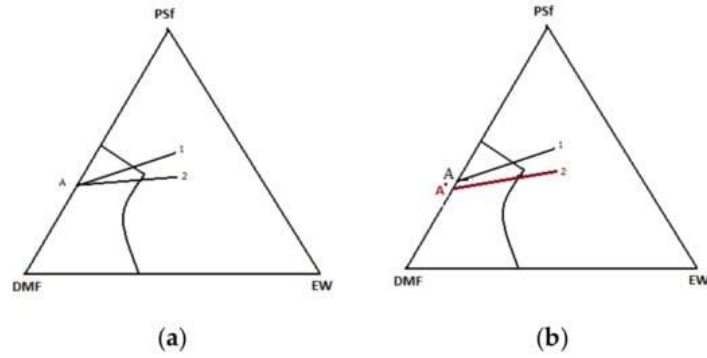


Figure 9. The schematic composition route for the active layer (1) and the porous layer (2) of the polymeric film starting from the initial composition A: according to the theory—(a) and according to this work—(b).

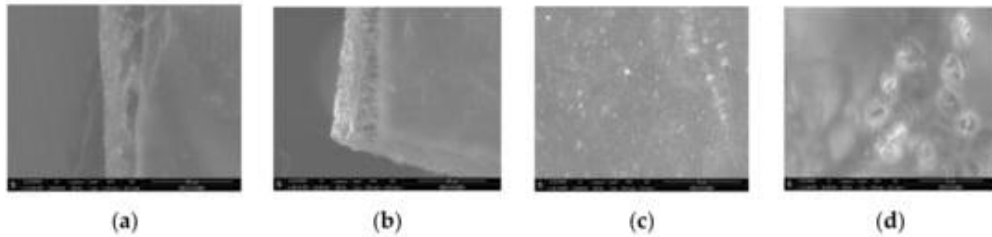


Figure 10. Polysulfone membrane (independent validation analysis): (a)—Upper active layer (section), (b)—bottom active layer (section), (c)—surface and (d)—back surface (bottom surface).

In this paper, for the PSf-DMF-EW ternary system in discussion, it is studied the position of point A (Figure 9) from which the coagulation started. Thus, the ternary system's departure from point A (homogeneous solution of polysulfone in DMF), both for forming the active layer and the microporous substrate (Figure 9a), is obviously forced. This statement is justified because, after forming the active layer, a quantity of polymer is removed from the system. The macroporous layer's coagulation begins in a solution of lower concentration (point A' on Figure 9b) due to the fact that the polysulfone film in dimethylformamide practically never starts from point A where the PSF-DMF side is from a homogeneous system. Much closer to reality, and as this work experiments prove it, the starting point in coagulation is inside the diagram, so the coagulation in the bath starts from a ternary system as highlighted in Figure 11.

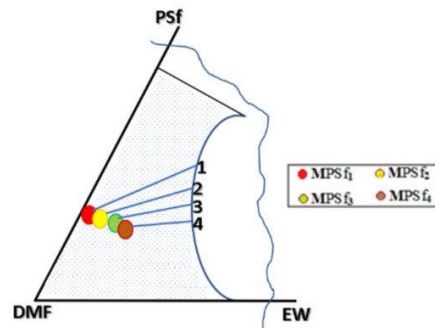


Figure 11. The schematic composition route of the polymeric film starting from the composition determined by the contact with the environment at times of 1 min (MPSf1), 3 min (MPSf2), 7 min (MPSf3), and 12 min (MPSf4).

Evidently, for graphic reasons, the left-down corner position of the ternary diagram was exaggerated—[Figure 11](#). Still, it complies with the physical reality in that the polymeric film is penetrated by chemical species from the atmosphere (water vapor and carbon dioxide) that determine the beginning of phase inversion, the transition to a biphasic system (dispersion of polymeric nanoparticles in polysulfone solution with a slightly lower concentration—[Figure 11](#)). In this way, asymmetric membranes with different characteristics are obtained. Although, the asymmetric aspect is identical for all the obtained membranes, the surface morphology is different ([Table 1](#)), resulting in smaller and smaller pore sizes when the exposure time to environment increases. The pore size is determined by the dimension of the nanoparticles (highlighted in [Figure 12](#)) that generate them by intercalation, and it decreases in order: MPSf1 > MPSf2 > MPSf3 > MPSf4.

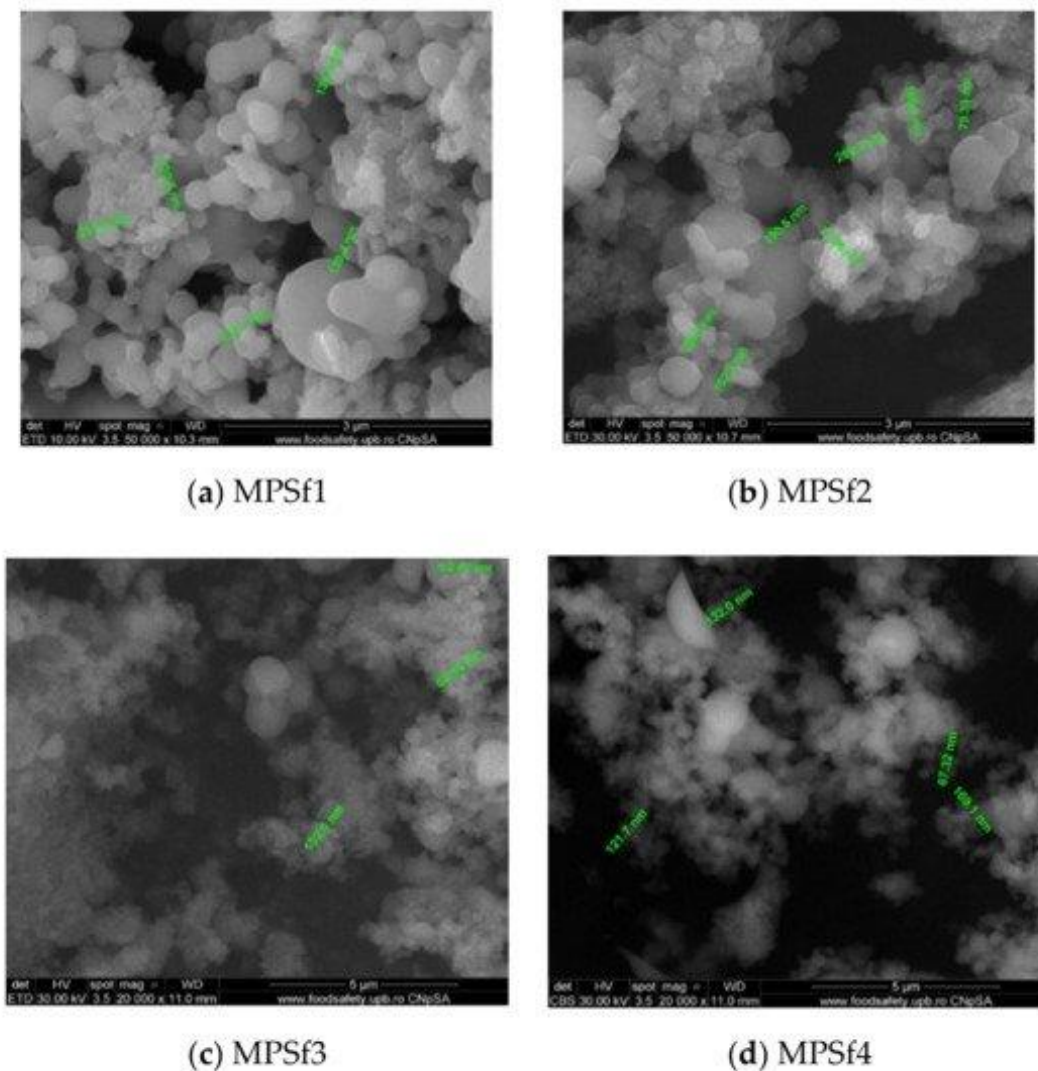


Figure 12. Morphology and dimensions of micro- and nanoparticles in the membrane section.

Of course, the pore size of open micropores on the posterior surface varies in the same direction: MPSf1 > MPSf2 > MPSf3 > MPSf4 and it was determined by measuring all pores on the image obtained by SEM microscopy as indicated. In [Figure 13](#) it is presented the pore size assessment for the MPSf1 membrane.

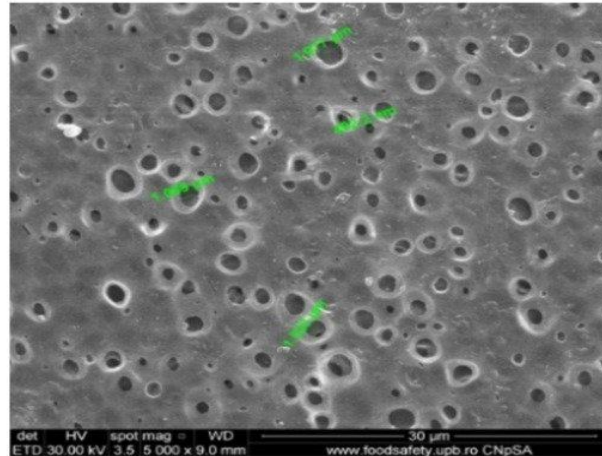


Figure 13. Illustration of the pore size on the posterior surface in the SEM image obtained for MPSf1.

As known, the characterization of the surface morphology means the visualization of a tiny area. The information can be relative, but the macroscopic determinations, such as the porosity of the membranes determined gravimetrically by watering could give a solid support. The porosity data obtained ([Table 1](#)) confirmed the previous observation, respectively, that the porosity decreases as $\epsilon_{\text{MPSf1}} > \epsilon_{\text{MPSf2}} > \epsilon_{\text{MPSf3}} > \epsilon_{\text{MPSf4}}$.

The thermal characterization, which theoretically would have generated identical results for the four membranes, provided interesting information that confirms that the four membranes have different thicknesses and that they are nanostructured, which (if conditioned) often have a remnant adsorbed content.

The MPSf1 sample ([Figure 14a](#)) lost 4.41% of the initial mass up to 150 °C with an endothermic effect having a minimum of 71.9 °C. Most likely, the sample lost weakly bound solvent (water) molecules. Between 150–375 °C, the sample mass decreased with 4.58% without a clear contoured effect on the DSC curve. This could be assigned to the exothermic effects that could overlap with endotherms of about the same intensity, so only the resultant effect is visible—it would mean a slight decomposition, accompanied by partial oxidation.

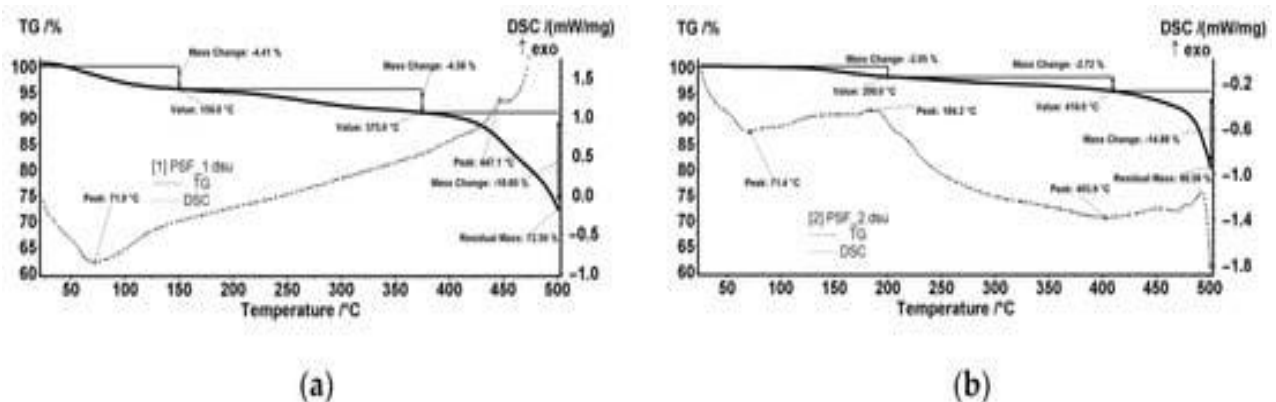


Figure 14. Weight loss (TG) and thermal effects (DSC) diagrams for MPSf1 (a) and MPSf2 (b).

After 375 °C, the sample started to suffer an accelerated oxidative degradation, up to 500 °C, losing 18.60% of the initial mass. A first exothermic effect was observed at 447.1 °C, the second exothermic effect having the maximum after 500 °C. The residual mass at 500 °C was 72.50%.

The MPSf2 sample (Figure 14b) lost 2.05% of the mass between room temperature (RT) and 200 °C. The process was accompanied by an endothermic effect with a minimum at 71.4 °C, which indicated the loss of some solvent/water molecules. Towards the end of the interval, a peak could be observed at 184.2 °C, probably from a weak oxidation.

Between 200–410 °C, the sample lost 2.72% of the initial mass. The process was accompanied by a weak endothermic effect, broad, which indicated a slight decomposition. After 410 °C, the sample started to decompose faster, up to 500 °C, losing 14.88% of the mass. The thermal effect was endothermic, which indicated a predominant decomposition process (unlike the one from MPSF1 where oxidation predominates). The residual mass at 500 °C was 80.58%.

The MPSf3 sample (Figure 15a) lost 1.48% of the mass between RT-200 °C. An endothermic effect with a minimum at 70.4 °C accompanies this process that indicated the loss of some solvent/water molecules. Towards the end of the interval, an exothermic peak was observed at 197.4 °C, probably from weak oxidation. Between 200–410 °C, the sample recorded 1.86% decrease of the initial mass. The process was accompanied by a weak endothermic effect, broad, which indicates a slight decomposition. After 410 °C, the sample started to decompose faster, up to 500 °C, losing 9.60% of the mass. The thermal effect is endothermic, which indicated a predominant decomposition process. The residual mass at 500 °C was 87.06%.

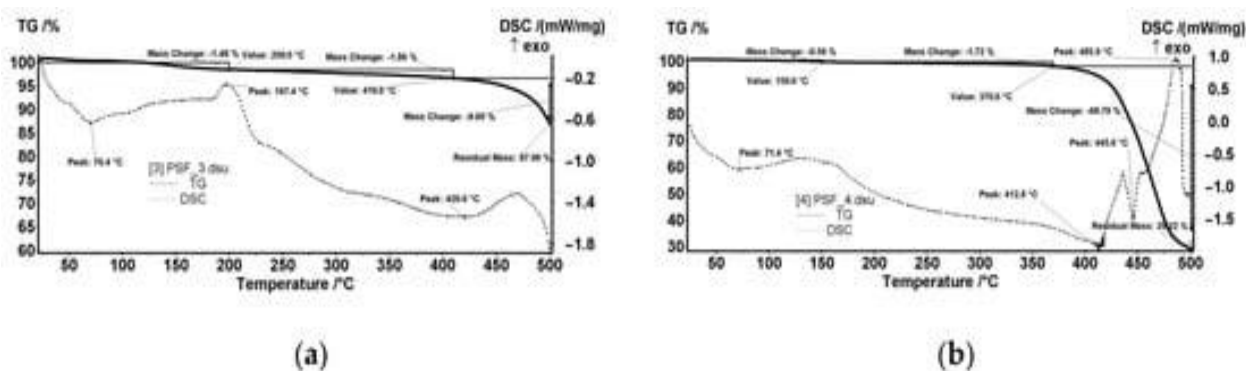


Figure 15. TG and DSC diagrams MPSf3 (a) and MPSf4 (b).

For the MPSf4 sample (Figure 15b), in the RT-150 °C interval, the sample lost 0.56% of the initial mass, the endothermic process having the minimum at 71.4 °C. Between 150–370 °C, the sample mass decreased with 1.72%. After 370 °C, the decomposition of the sample occurred, the mass loss being of 68.79% up to 500 °C. The DSC curve showed two endothermic effects (corresponding to decompositions) with minimums at 412.8 and 445.6 °C. An exothermic process with a maximum at 485.9 °C, indicating an oxidation process, followed the previous thermic effects.

The residual mass at 500 °C was 29.22%, which could be explained by the polymer and excess solvents' combustion, which also generated the observed thermal effect.

Two hypotheses might explain the results of the thermal analysis:

- The thickness of the membranes may indirectly influence this process. For analysis, the crucible usually contains at least a 4–5 mg sample. It means to use several round cut membranes (disks),

one on top of the other. The membrane disks' thickness conditions the number of disks used: 2–3 or 4–6 disks if it is too thin. The oxygen access (easier or difficult) towards the sample depends on its thickness. Consequently, depending on how many membrane disks are in the crucible, the decomposition, or oxidation processes at high temperatures may predominate.

- The size of the polymeric nanoparticles that form the membranes and the fact that they superficially retain the liquid components of the thermal system influence the objectivity of results.

Both hypotheses correlate with the experimental data observed by electron microscopy, porosity, and the geometric (micrometric) thickness of the membranes ([Table 1](#)).

To objectively state the decisive influence of the exposure time on the polysulfone solution film before immersion into the coagulation bath (as part of the membranes obtaining process by precipitation immersion), we performed the classical tests of pure water permeation and retention of a standard protein (BSA) ([Table 2](#)).

The results show that the normalized solvent flows (J) decrease in the order:

$$J_{MPSf1} > J_{MPSf2} > J_{MPSf3} > J_{MPSf4}$$

which correlates very well with the thickness and porosity of the membranes.

The retention values (R) generally confirm the findings:

$$R_{MPSf3} > R_{MPSf4} > R_{MPSf2} > R_{MPSf1}$$

The slight decrease in retention in the case of the MPSf4 membrane is a consequence of the membrane collapse due to the solvents remaining in a larger quantity on the particle surface, a fact observed in the deviation of other determining characteristics.

5. Conclusions

Obtaining membranes by the phase inversion method, the precipitation immersion technique, remains one of the most accessible for obtaining asymmetric anisotropic membranes.

Although the precipitation immersion technique is simple, it consists of forming a polymer solution film, extending it on support, and immersing it in the coagulation bath. It has multiple operational parameters: polymer solution concentration, solvent nature, non-solvent nature, and type of post-formation treatment.

In this context, although it is often specified, for the time elapsed between the formation of the polymer solution film and its contact with the coagulation bath no method has been developed to track its influence on the formation of the asymmetric membrane.

This paper presents an electrochemical technique for tracking the evolution of the polymer solution film. By choosing the contact time, it was possible to establish its influence on the membrane formed by subsequent coagulation.

To highlight this process, four representative times were chosen based on the electrochemical parameters diagram, obtaining four different membranes: MPSf1; MPSf2; MPSf3, and MPSf4.

Through complementary membrane analysis techniques as scanning electron microscopy, thermal analysis, water permeation, bovine serum albumin retention, but also porosity and thickness, it was established that the process performances in terms of fluxes and retention of the membranes increase in the order: MPSf1 > MPSf2 > MPSf3 < MPSf4.

Our work proved that to obtain membranes with desired performances, it is necessary to establish an optimal stationary time for contact with the environment, which could be determined from the specific behavior of electrochemical parameters for the polymer solution film. Simultaneously, the maximum contact time with the environment can be established so that to avoid obtaining membranes with inferior characteristics.

PARTEA C – OVERALL CONCLUSIONS AND PERSPECTIVES OF THE RESEARCH

C 1. OVERALL CONCLUSIONS

The doctoral thesis "Selective composite membranes with biological applications" aimed at obtaining, characterizing and applying nanostructured membranes.

The main objective of the thesis "Obtaining and characterizing selective nanostructured membranes applied in processes of separation of biological compounds" was to study the preparation and applicability of nanostructured membranes to the separation of biological compounds (proteins).

The study of the literature highlighted the progress made by the use of composite and nanocomposite membranes in the separation of biological compounds.

Membranes have become essential elements of the technologies of depollution, recovery and concentration of chemical species in dilute solutions.

Among the most advanced types of membranes, the nanostructured ones and based on nanoparticles or reactive chemical nanospecies are the most frequently studied in the current stage.

The applications of nanocomposite and nanostructured membranes have diversified to cover the extractive industry, the food and agriculture industry, the chemical and petrochemical industry, but also biotechnology, biomedicine and environmental protection.

The separation of biological products and in particular of proteins is in this context an area of great interest and topicality.

The experimental part aimed at obtaining, characterizing and applying two types of membranes, as follows:

1. Study of obtaining membranes by phase inversion:
 - a. Polysulfone based membranes.
 - b. Cellulose acetate-based membranes.
2. Characterization by the latest physico-chemical techniques:
 - a. Scanning electron microscopy.
 - b. Infrared and UV-Vis spectrometry.
 - c. Electrochemical techniques.
 - d. Elemental (EDAX) and thermal (ATD; DSC) analysis.
 - e. Prevention of solvents.
 - f. Rejection of standard proteins.

3. Study of protein separation through prepared nanostructured membranes.

Obtaining membranes by the phase inversion method, the precipitation immersion technique remains one of the most accessible for obtaining asymmetric anisotropic membranes.

Although the precipitation immersion technique is simple, it consists in forming a polymer solution film, extending it on a support and immersing it in the coagulation bath, it has multiple operational parameters: polymer solution concentration, solvent nature, insolvent nature and type of post-formation treatment.

In this context, the time elapsed between the formation of the polymer solution film and its contact with the coagulation bath, although often stated, no method has been developed to trace the influence on the formation of the asymmetric membrane.

This part presents an electrochemical technique for monitoring the evolution of the polymer solution film and by choosing the contact times it was possible to establish the influence on the membrane formed by subsequent coagulation.

In order to highlight this process, four representative times were chosen from the diagram of electrochemical parameters for the appearance of the curves in the diagram, obtaining four membranes: MPSf1; MPSf2; MPSf3 and MPSf4.

Complementary membrane analysis techniques: scanning electron microscopy, thermal analysis, water permeation, bovine serum albumin retention, but also porosity and thickness established that the process performance of membranes increases in the order:

MPSf1 > MPSf2 > MPSf3 < MPSf4

This conclusion shows that by determining the variation curves of the electrochemical parameters of the polymer solution film, an optimal stationary time can be imposed in contact with the environment so as to obtain the desired performance. At the same time, the maximum contact time with the environment can be established so that membranes with inferior characteristics are not obtained.

Membranes based on biopolymers and artificial polymers have been reconsidered in current field studies due to their superior biodegradability and easy preparation in a wide range of morphologies and designs.

The paper presents the results of the use as a raw material of cellulose acetate in used film films, thus capitalizing on both the polymer and the silver on the surface of the films.

By phase inversion, ultrafiltration membranes were obtained from a 10% cellulose acetate solution.

Recovered cellulose acetate membranes were compared with membranes obtained under the same conditions from standard cellulose acetate.

Membranes were characterized morpho-structurally (FTIR, SEM) and in the process of protein ultrafiltration (BSA). Permeate fluxes were higher in standard cellulose acetate membranes (by about 10%), but retention was higher in acetate membranes from film films (by 10%).

The presence of silver nanoparticles in the recovered membrane material can provide resistance to biofouling and biodegradation.

C 2. ORIGINALITY ELEMENTS OF THE DOCTORAL THESIS

In the thesis "**Selective composite membranes with biological applications**" three new types of membranes were obtained:

- Nanostructured quartz nanofiber membranes decorated with titanium dioxide polysulfone obtained by phase inversion.
- Nanostructured polysulfone membranes obtained by phase inversion controlled by electrochemical techniques.
- Cellulose-derived composite membranes recovered from film films on microporous polypropylene support.

Two new separation processes involving composite membranes have been developed:

- Separation by composite membranes cellulosic derivative-microporous support driven by the pH gradient.
- Separation of proteins (BSA) by nanostructured and nanocomposites based on polysulfone.

C3. RESEARCH PERSPECTIVES

The research undertaken during the doctoral research internship “Selective composite membranes with biological applications” allows the development of new applications of the separation processes through composite membranes in magnetic field and with pH gradient.

SELECTIVE REFERENCES

- [121]. *Zsigmondy, R., and Bachman, w., Z. Anorg. Allgem. Chem.*, 103 (1918), 119.
- [122]. *S. Loeb, S. Sourirajan, Adv. Chem.* 38, 1962, 117.
- [123]. *L.Broens, F.W.Altena, C.A.Smolders, D.M.Koenhen, Asymmetric membrane structures as a result of phase separation phenomena, Desalination*, 32, 1980, 33-45.
- [124]. *Richard W. Baker, „Membrane Technology and Applications”, 2nd edition, John Wiley & Sons, Ltd., 2004, ISBN: 0-470-85445-6.*
- [125]. *M. Mulder, „Basic Principles of Membrane Technology”, Kluwer Academic Publishers, Netherlands, 1996, pp. 56–58, 420.*
- [126]. *Y.D. Kim, J.Y. Kim, H.K. Lee, S.C. Kim, A new modeling of asymmetric membrane formation in rapid mass transfer system, J. Membr. Sci.*, 190, 2001, 69–77.
- [127]. *A. Akthakul, C.E. Scott, A.M.Mayes, A.J. Wagner, Lattice, Boltzmann simulation of asymmetric membrane formation by immersion precipitation, J. Membr. Sci.*, 249, 2005, 213–226.
- [128]. *X.He, C.Chen, Z.Jiang, Y.Su, Computer simulation of formation of polymeric ultrafiltration membrane via immersion precipitation, J. Membr. Sci.*, 371, 2011,106-116.
- [129]. *G. Arthanareeswarana,, D. Mohanb, M. Raajenthirenb, Preparation, characterization and performance studies of ultrafiltration membranes with polymeric additive, J. Membr. Sci.*, 350, 2010, 130–138.
- [130]. *G Nechifor, SI Voicu, AC Nechifor, S Garea, Nanostructured hybrid membrane polysulfone-carbon nanotubes for hemodialysis, Desalination* 241 (1-3), 342-348, 2009.
- [131]. *G Nechifor, E Eftimie Totu, AC Nechifor, I Isildak, O Oprea, CM Cristache, Non-Resorbable Nanocomposite Membranes for Guided Bone Regeneration Based on Polysulfone-Quartz Fiber Grafted with Nano-TiO₂, Nanomaterials* 9 (7), 985, 2019.
- [132]. *MG Miricioiu, C Iacob, G Nechifor, VC Niculescu, High selective mixed membranes based on mesoporous MCM-41 and MCM-41-NH₂ particles in a polysulfone matrix, Frontiers in Chemistry* 7, 332, 2019.
- [133]. *RE Scutariu, G Batrinescu, G Nechifor, M Popescu, AG Tenea, Separation of the collagen protein by ultrafiltration: Effects of concentration on the membrane's characteristics, Polymer Engineering & Science* 60 (10), 2487-2495, 2020.
- [134]. *A. Idris, L.K. Yet, The effect of different molecular weight PEG additives on cellulose acetate asymmetric dialysis membrane performance, J. Membr. Sci.*, 280, 2006, 920–927.
- [135]. *G. Arthanareeswarana,, D. Mohanb, M. Raajenthirenb, Preparation, characterization and performance studies of ultrafiltration membranes with polymeric additive, J. Membr. Sci.*, 350, 2010, 130–138.
- [136]. *N.A. Ochoa, P. Pradanos, L. Palacio, C. Pagliero, J. Marchese, A. Hernandez, Pore size distributions based on AFM imaging and retention of multidisperse polymer solutes: characterisation of polyethersulfone UF membranes with dopes containing different PVP, J.Membr. Sci.*, 187, 2001, 227–237.

- [137]. *J. Qin, M.H. Oo, Y. Li*, Development of high flux polyethersulfone hollow fiber ultrafiltration membranes from a low critical solution temperature dope via hypochlorite treatment, *J. Membr. Sci.*, 247, 2004, 137–142.
- [138]. *R.M. Boom, I.M. Wienk, Th. Van den Boomgaard, C.A. Smolders*, Microstructures in phase inversion membranes. Part 2. The role of a polymeric additive, *J. Membr. Sci.*, 73, 1992, 277–292.
- [139]. *M.J. Han, D. Bhattacharyya*, Characterization of reverse osmosis cellulose acetate membranes by gas adsorption method: effect of casting variables and chlorine damage, *J. Membr. Sci.*, 62(3), 1991, 325–346.
- [140]. *J. Crank, G.S. Park*, "Diffusion in Polymers", Academic Press, New York, 1968
- [141]. *C. Guizard, G. Rios*, Chapter 12 Transport and fouling phenomena in liquid phase separation with inorganic and hybrid membranes, *Membrane Science and Technology*, **vol. 4**, 1996, 569–618.
- [142]. *B.T. Jiang, P.K. Chan*, Effect of concentration gradient on the morphology development in polymer solutions undergoing thermally induced phase separation, *Macromol. Theory Simul.*, 16, 2007, 690–702.
- [143]. *C. Barth, M.C. Goncalves, A.T.N. Pires, J. Roeder, B.A. Wolf*, Asymmetric polysulfone and polyethersulfone membranes: effects of thermodynamic conditions during formation on their performance, *J. Membr. Sci.*, 169, 2000, 287–299.
- [144]. *Q.Z. Zheng, P. Wang, Y.N. Yang, D.J. Cui*, The relationship between porosity and kinetics parameter of membrane formation in PSF ultrafiltration membrane, *J. Membr. Sci.*, 286, 2006, 7–11.
- [145]. *C.S. Feng, R. Wang, B.L. Shi, G.M. Li, Y.L. Wu*, Factors affecting pore structure and performance of poly(vinylidene fluoride-co-hexafluoro propylene) asymmetric porous membrane, *J. Membr. Sci.*, 277, 2006, 55–64.
- [146]. *Y.Q. Wang, Y.L. Su, Q. Sun, X.O. Ma, X.C. Ma, Z.Y. Jiang*, Improved permeation performance of Pluronic F127-polyethersulfone blend ultrafiltration membranes, *J. Membr. Sci.*, 282, 2006, 44–51.
- [147]. *S.Y. Yang, J. Park, J. Yoon, M. Ree, S.K. Jang, J.K. Kim*, Virus filtration membranes prepared from nanoporous block copolymers with good dimensional stability under high pressures and excellent solvent resistance, *Adv. Funct. Mater.*, 18, 2008, 1371–1377.
- [148]. *A. Akthakul, W.F. MacDonald, A.M. Mayes*, Noncircular pores on the surface of asymmetric polymer membranes: evidence of pore formation via spinodal demixing, *J. Membr. Sci.*, 208, 2002, 147–155.
- [149]. *P. Radovanovic, S.W. Thiel, S.T. Hwang*, Formation of asymmetric polysulphone membranes by immersion precipitation. Part I. Modeling mass transport during gelation, *J. Membr. Sci.*, 65, 1992, 213–229
- [150]. *H. Tompa*, „Polymer Solutions”, Butterworths Scientific Publications, London, 1956
- [151]. *F.W. Altena, C.A. Smolders*, Calculation of liquid-liquid phase separation in a ternary system of a polymer in a mixture of a solvent and a nonsolvent, *Macromolecules*, 15, 1982, 1491–1497
- [152]. *C. Cohen, G.B. Tanny, S. Prager*, Diffusion-controlled formation of porous structures in ternary polymer system, *J. Polym. Sci. Polym. Phys. Ed.*, 17, 1979, 477–489
- [153]. *A.J. Reuvers, C.A. Smolders*, Formation of membranes by means of immersion precipitation. Part II. The mechanism of formation of membranes prepared from the system cellulose acetate-acetone-water, *J. Membr. Sci.*, 34, 1987, 67–86
- [154]. *A.J. Reuvers, J.W.A. van den Berg, C.A. Smolders*, Formation of membranes by means of immersion precipitation. Part I. A model to describe mass transfer during immersion precipitation, *J. Membr. Sci.*, 34, 1987, 45–65

[155]. *Y.D. Kim, J.Y. Kim, H.K. Lee, S.C. Kim*, A new modeling of asymmetric membrane formation in rapid mass transfer system, *J. Membr. Sci.*, 190, 2001, 69–77

Published paper **Cristina BĂRDACĂ (URDUCEA)**

1. **Bărdacă, C.U.**, Nechifor, A.C., Dimulescu, I.A., Oprea, O., Nechifor, G., Totu, E.E., Isildak, I., Albu, P.C., Bungău, S.G. Control of nanostructured polysulfone membrane preparation by phase inversion method. (2020) *Nanomaterials*, 10 (12), art. no. 2349, pp. 1-21. Cited 7 times.
2. Cotorcea, S., Dimulescu, I.A., Pașcu, D., **Bărdacă, C.**, Nechifor, G., Membranes based on cellulose acetate recovered from cinematographic films for protein retention (2021) *UPB Scientific Bulletin, Series B: Chemistry and Materials Science*, 83 (4), pp. 43-54.
3. Dimulescu, I.A., Nechifor, A.C., **Bărdacă, C.**, Oprea, O., Pașcu, D., Totu, E.E., Albu, P.C., Nechifor, G., Bungău, S.G. Accessible silver-iron oxide nanoparticles as a nanomaterial for supported liquid membranes. (2021) *Nanomaterials*, 11 (5), art. no. 1204, . Cited 9 times.
4. Negrut, N., Bungau, S., Marian, P., Endres, L., Rus, M., Bustea, C., **Bardaca, C.**, Sava, C. Disseminated tuberculosis related to child acute cytomegalovirus infection. (2020) *Revista de Chimie*, 71 (3), pp. 154-160.
5. Hasegan, A., Totan, M., Antonescu, E., Bumbu, A.G., Pantis, C., Furau, C., **Bardaca, C.**, Grigore, N. Prevalence of urinary tract infections in children and changes in sensitivity to antibiotics of *E. Coli* Strains. (2019) *Revista de Chimie*, 70 (11), pp. 3788-3792
6. Abd El Hamid, M.I., Abd El Fatah, W.M., El Morsi, A.A., Draz, M.S., Kallakuri, S., Bungau, S., Endres, L., **Bardaca, C.**, Hafez, E.E. Anti-HIV / HCV activity of cyanobacterial phycobiliproteins by a new standardized method using bacteriophage surrogates.(2019) *Revista de Chimie*, 70 (9), pp. 3115-3122. SOURCE: Scopus.
7. Judea Pusta, C.T., Bungau, S., Buhas, C.L., Popa, A.R., Vesa, C.M., Buhas, B.A., **Bardaca, C.**, Tit, D.M., Daim, M.A., Judea, A.S. Experimental study upon the virulence of infectious microbial agents involved in violent deaths presenting septic states. (2019) *Revista de Chimie*, 70 (8), pp. 2720-2726.